

design oriented knowledge production -towards knowledge co-construction

Position Paper for NordiCHI 2006 Workshop (Oct. 15th, 2006):
Improving the Relationship between Research and Practice in Interaction Design

Olav W. Bertelsen,
olavb@daimi.au.dk



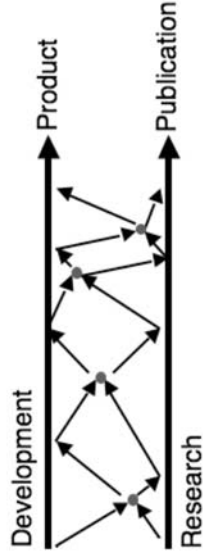
UNIVERSITY OF AARHUS

DEPARTMENT OF COMPUTER SCIENCE

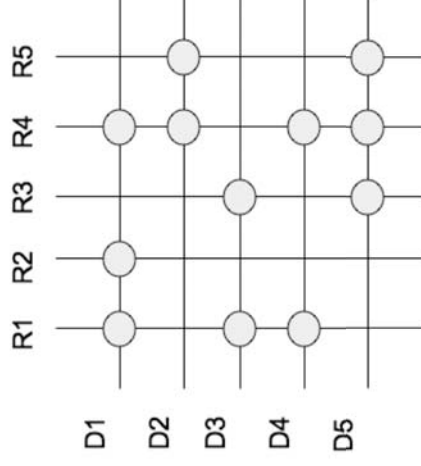
Olav W. Bertelsen
Research and Practice Workshop at NordiCHI 2006

collaboration models

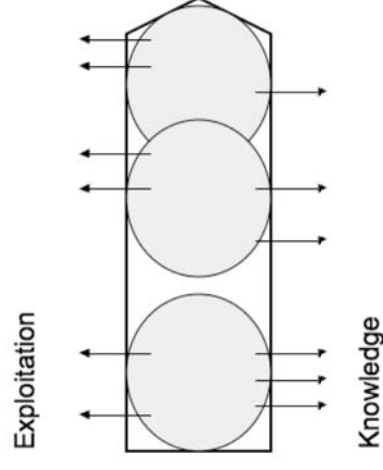
Parallel effort model



Matrix



Joint Course



UNIVERSITY OF AARHUS

DEPARTMENT OF COMPUTER SCIENCE

Olav W. Bertelsen
Research and Practice Workshop at NordiCHI 2006

research strategies

- **Descriptive research (e.g. of “best practice”)**
- **Technology driven experiments aided by user involvement**
- **Action research**
- **Consulting**
 - In many cases the most realistic way to get in touch with the object of research



UNIVERSITY OF AARHUS

DEPARTMENT OF COMPUTER SCIENCE

Olav W. Bertelsen
Research and Practice Workshop at NordiCHI 2006

academic vs. industrial practice

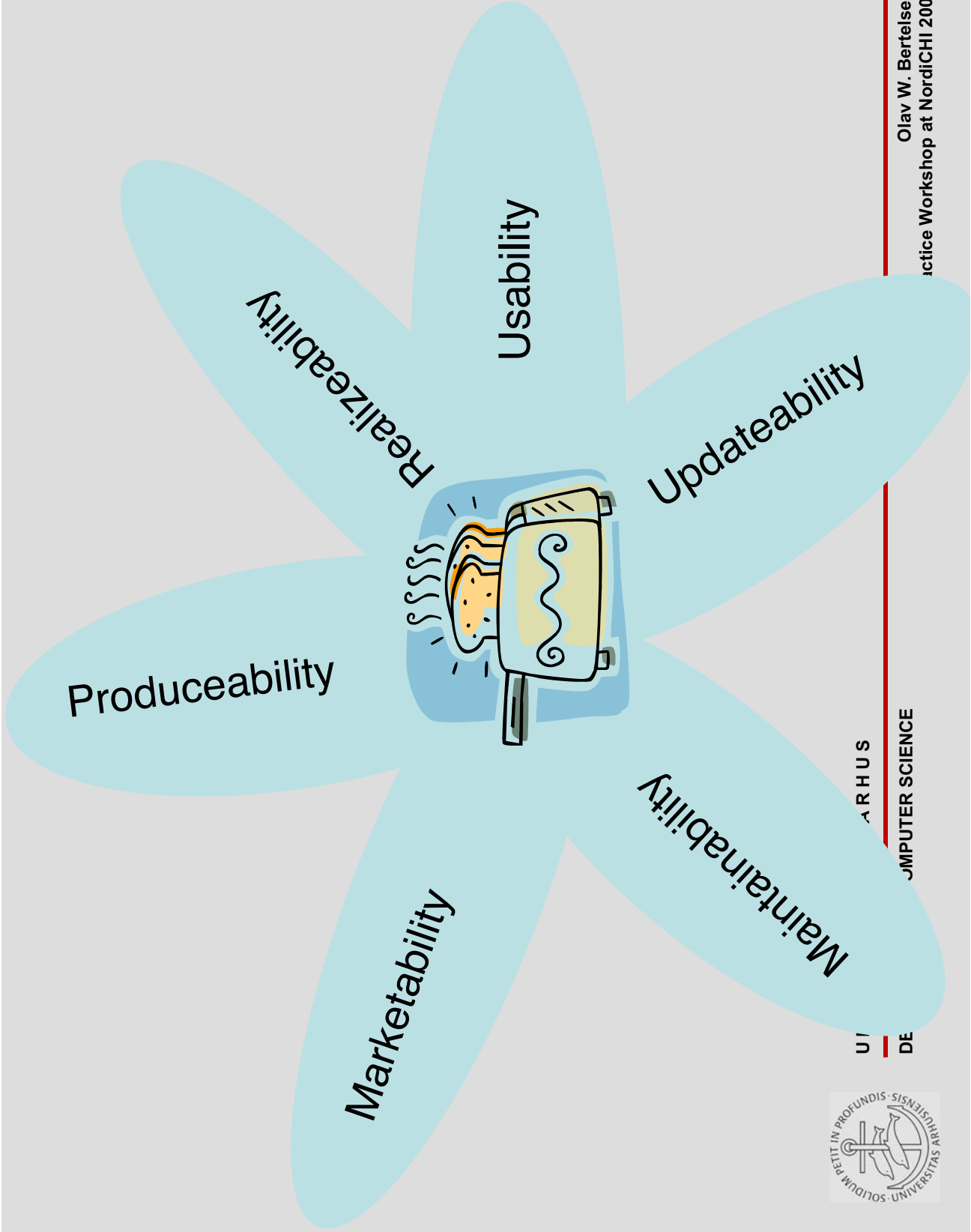
- **A non-trivial transition**
- **Not just transfer**
 - Not for any of the research strategies
- **Industrial practice could inspire the development of new techniques for the involvement of users**
 - E.g. based on experience from current sales work
- **Co-construction of new practice**
 - Transfere - share - co-construct



UNIVERSITY OF AARHUS

DEPARTMENT OF COMPUTER SCIENCE

Olav W. Bertelsen
Research and Practice Workshop at NordiCHI 2006



UNIVERSITY OF
ARHUS
COMPUTER SCIENCE

Olav W. Bertelsen
Practice Workshop at NordiCHI 2006

knowledge is action

- **In a design oriented epistemology knowledge can only be validated by looking at the change it induce.**



UNIVERSITY OF AARHUS
DEPARTMENT OF COMPUTER SCIENCE

Olav W. Bertelsen
Research and Practice Workshop at NordiCHI 2006

knowledge co-construction

- **Taking of from best practice in a broad range of industrial practices (sales etc.)**
- **SME resource cooperatives**



UNIVERSITY OF AARHUS

DEPARTMENT OF COMPUTER SCIENCE

Olav W. Bertelsen
Research and Practice Workshop at NordiCHI 2006